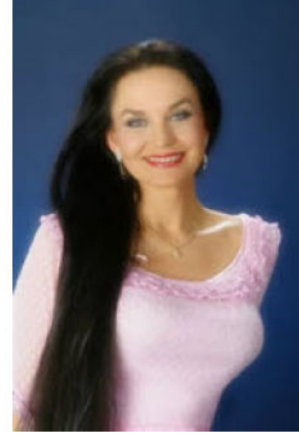


# Crystal Gayle

“Before country was ‘cool,’ Crystal was ‘class’...” Crystal encapsulates everything the dazzling qualities of her name implies. Her warm, resonant vocal styling captures the imagination and attention of audiences and there’s a sophistication and a beguiling charm about her look and her voice that makes a memorable imprint on every listener.



The blue eyed beauty from an Appalachian coal mining town took country music to town on her arm in the ‘70’s and introduced it to mainstream audiences. “Don’t It Make My Brown Eyes Blue” opened the world’s eyes to Crystal Gayle. She became a household name in homes, grand and small, from Louisville to Leningrad.

Saturday, March 28, 2009 - 7:30 p.m.  
Ocotillo Performing Arts Center - Tickets \$25.00